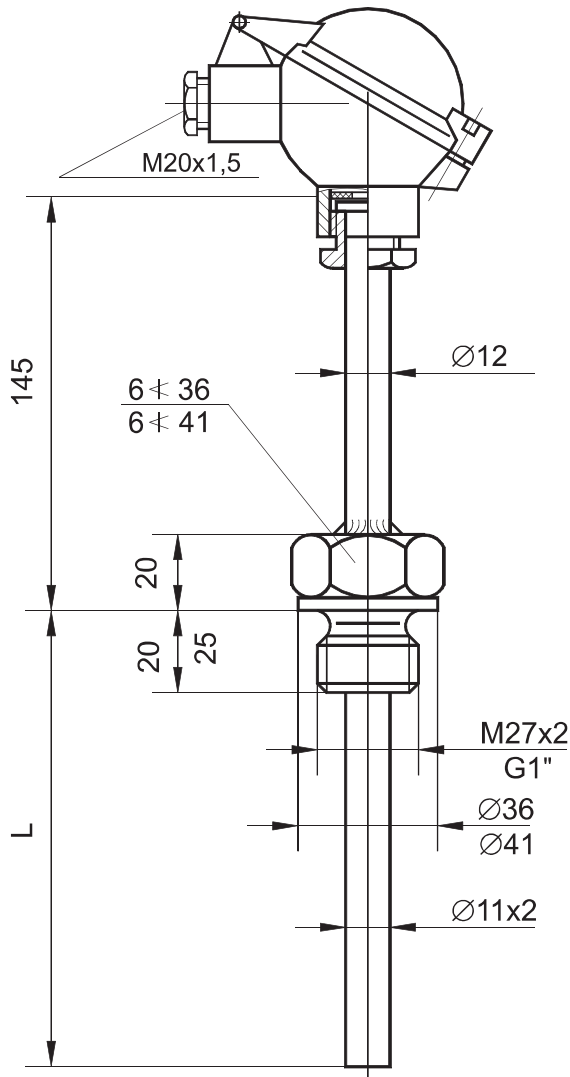


TEMPERATURE SENSOR TYPE CT G1



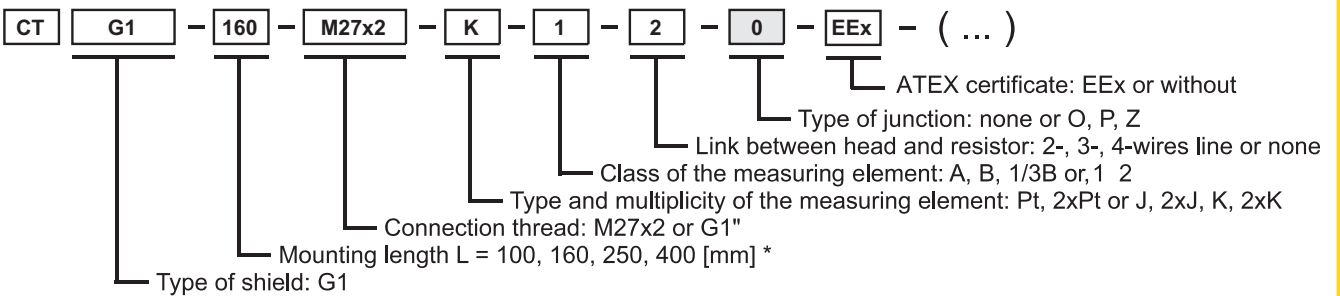
TECHNICAL DATA:

1. Measuring range:
Pt: -200 ... 550 [°C]
J/K: -200 ... 550 [°C]
2. Admissible load:
see **Graph 3**
3. Material of wetted parts:
304ss or 316Lss
4. Standard immersion length L:
100, 160, 250, 400 [mm] (*)
5. Process connection:
M27x2
6. Time constant:

Pt	T _{0,5} [s]	T _{0,9} [s]
	≤ 40	≤ 120

7. Diameter of the measuring insert:
Ø= 6 [mm]
8. Minimal immersion depth:
Pt: 80 [mm]
J/K: 70 [mm]
9. Admissible vibrations at mounting site:
5 ... 80 [Hz] (do 5 [g])

EXAMPLE OF ORDER:



ADDITIONAL INFORMATION:

- 1.* Non-standard length of temperature sensors on demand.
2. Type of exchangeable insert: W1, W3.
3. To specify temperature sensor with the head - mounted transmitter please add code of transmitter at the end of ordering code of sensor (see chapter X) e.g.

